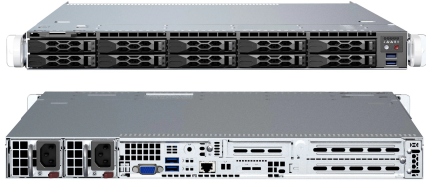


SuperChassis LB16AC2-R504W



- ▶ **Chassis Manual**
- ▶ **Optimization**

Note: Image above may show a varied configuration of optional parts. Please refer to parts list for standard parts included.

Key Features

1. **SAS3 12Gb/s and NVMe support**
Optimized for WIO (W series) motherboards, support MB size up to 12.3" x 13.4"
2. 10 x 2.5"(tool-less) hot-sw ap SAS3/SATA drive bay
3. SAS or enterprise SATA HDD only recommended
4. 1U SAS/SATA Backplane with SES2 support
5. 1U 500W Redundant power supply Platinum level, 24Pin output
6. 2x full-height & full-length expansion slot(s) 1x low -profile expansion slot
7. 3 x 40x56mm counter-rotation PWM fan(s)
8. Support Service Tag for system information
9. OEM Only, MOQ Applies

Specifications

Product SKUs

- CSE-LB16AC2-R504W ■ SuperChassis LB16AC2-R504W

Form Factor

- Optimized for WIO (W series) motherboards, support MB size up to 12.3" x 13.4"

Processor Support

- Dual, single Intel® / AMD processors

Dimensions

- **Height** 1.7" (43 mm)
- **Width** 17.2" (437 mm)
- **Depth** 23.5" (597 mm)
- **Gross Weight** 40 lbs (18.14 kg)
- **Packaging (W x H x L)** 23.1" (587 mm) x 6.9" (175 mm) x 32.2" (818 mm)
- **Available Color** Black

Expansion Slots

- 2x full height expansion slot(s), 1x low-profile expansion slot

Drive Bays

- 10 x 2.5" hot-sw ap SAS3/SATA drive bay

Backplane

- 10-port 1U SAS3 12Gbps Hybrid backplane, support up to 8x 2.5-inch SAS3/SATA3 HDD/SSD and 2x SAS3/SATA3/NVMe Storage Devices

Front Panel

- **Buttons**
 - Power On/Off button
 - Unit Identification (UID) button
- **LEDs**
 - 2 Network Activity LEDs
 - HDD activity LED
 - Power Status LED
 - Unit Identification (UID) LED
- **Ports**
 - 2x USB 3.0 Port(s)

Systems Cooling

- **Fans** 3 x 40x56mm counter-rotation PWM fan(s)

Operating Environment (System)

- **Operating Temperature Range** 5°C - 35°C (41°F - 95°F)
- **Non-Operating Temperature Range** -40°C - 70°C (-40°F - 158°F)
- **Operating Relative Humidity Range** 8% - 90% (non-condensing)
- **Non-Operating Relative Humidity Range** 5% - 95% (non-condensing)

Power Supply

1U 500W/600W redundant single output 80PLUS Platinum

- **Power Efficiency** 92%
- **Total Output Power and Input**
 - 500W with Input 100 - 127Vac
 - 600W with Input 200 - 240Vac
- **AC Input Frequency** 50-60Hz
- **Dimensions (L x W x H)** 322 x 54.5 x 40.25 mm
- **Output Type** Backplanes (gold finger)
- **+12V**
 - Max: 42A (100Vac - 127Vac)
 - Max: 50A (200Vac - 240Vac)
 - Max: 50A
- **+5Vsb**
 - Max: 4A / Min: 0A
- **Power Distributor**
 - PDB-PT116-L8824
 - O/P: 12V/80
 - +5V Max: 25
 - +3.3V Max: 25
 - -12V Max: 0.6

Certification



■ Platinum Certified

Regulatory (Power Supply)

- **Power Supply Safety / EMC**
 - CCC
 - CE/EMC
 - FCC
 - TUV/CB
 - UL/CUL

Components

Standard Parts List

	Part Number	Qty	Description
HD Backplane	BNP-SAS3-116A-N2	1	10-port 1U SAS3 12Gbps Hybrid backplane, support up to 8x 2.5-inch SAS3/SATA3 HDD/SSD and 2x SAS3/SATA3/NVMe Storage Devices
Cable(s)	CBL-0335L	1	FRONT CTL CABLE 20 PIN TO 20 PIN W/TUBE,70CM,PBF
Part(s)	MCP-230-00038-0N	1	Top cover with 1 mylar for SC113, 116
Part(s)	MCP-240-00099-0N	1	1U WIO riser card bracket for SC113, SC815, SC119, SC819
Part(s)	MCP-270-00023-0N	1	1U SC116 chassis base(Redundant Power)
Fan(s)	FAN-0101L4	3	40x56,4 Pin PWM,Primary for SC809,111, Sec.for SC816,819,808
Front Panel	FPB-FP116-DU3	1	Front control board with two USB 3.0 for SC116/SC119X
Cooling Fan & Accessory	MCP-320-00027-0B	24	Plastic pin for 40x28, 40x56 fan
Cooling Fan & Accessory	MCP-320-00028-0B	1	Fan holder for 6pcs 40x56 fan, assemble-able for SC819/SC119/SC818/SC116
Cooling Fan & Accessory	MCP-340-00035-0B	3	Dummy fan 40x56mm for 40x56 counter-rotating fan (cost-effective)
Drive Tray(s)	MCP-220-00188-0B	10	Black gen-5.5 tool-less cost-effective 2.5" HDD tray (no dummy)
Power Distributor	PDB-PT116-L8824	1	1U cost effective Power Distributor Board support up to 1KW,
Part(s)	MCP-120-00029-0N	2	Blank FH L bracket without SCSI cutout for SC815,823
Part(s)	MCP-120-00030-0N	1	Blank LP L-bracket (1 row of capsule hole)
Power Supply & Accessory	MCP-250-00009-0N	1	SC113 Redundant Power Distributor Cover
Power Supply & Accessory	PWS-504P-1R	2	500W 1U Redundant PWS W/ 54.5MM Wide
Power Supply & Accessory	PWS-504P-1R2	2	1U Redundant 500W/600W, Platinum efficiency, AC inlet: C14,RoHS
Mounting Rail(s)	MCP-290-00107-0N	1 Set	Inner rail, front, short, screw type
Rear Window	MCP-240-00098-0N	1	WIO rear window for SC113,SC116, SC815 Redundant PWS

Optional Parts List

	Part Number	Qty	Description
Chassis parts	MCP-290-00088-0N	-	SC119 Intrusion assembly
Rail	MCP-290-00102-0N	-	Outer rail, quick-release type, 25.6" to 33.05"
Rail	MCP-290-00063-0N	-	Rail set, quick/quick, default for 1U 17.2"W for SC113/SC116,RoHS/REACH
Air Shroud	MCP-310-19019-0B	-	SC113/SC116/SC815/SC515, DP X11DDW Mylar air shroud
Air Shroud	MCP-310-81305-0B	-	Mylar air shroud for 1U X11SPW-TF,RoHS
Air Shroud	MCP-310-81306-0B	-	Mylar air shroud for 1U X12SPW-TF,RoHS

Motherboard (for CSE-LB16AC2-R504W)

H12SSW-IN

H12SSW-NT

X12SPW-TF

X12SPW-F

● = Most optimized Chassis for SuperServer Configuration

Blue color = Compatible

Green color = Global SKU & Compatible

Red dot & green color = Optimized + Global SKU